



**CLOVER HILL FOOD INGREDIENTS LTD.**

# **Christmas Catalogue 2016**



# CLOVER HILL FOOD INGREDIENTS LTD.

Mountleader Industrial Estate, Millstreet, Co. Cork. P51 E8PY

**Tel:** 029 - 21844 • **Fax:** 029 - 21845

**Email:** [sales@cloverhill.ie](mailto:sales@cloverhill.ie)

*Dear Customer,*

*Clover Hill is delighted to present our 2016 Christmas Catalogue and this year we have assembled our most exciting range ever!!!*

*New edible and non-edible decorations, packaging solutions and recipe suggestions, will help you to deliver an exciting and profitable range to your customers.*

*Orders before September 30th will receive priority and deliveries will commence from **7th of November**. Orders placed after September 30th up to Christmas week will be subject to availability.*

*Marie, Edel and Anneka in our customer service team, are on hand to advise and help with your selection and any queries you may have regarding your Christmas orders.*

*Wishing you a happy and prosperous Christmas.*

*Contact us today at:*

*T: +353 (0) 29 21844*

*F: +353 (0) 29 21845*

*E: [sales@cloverhill.ie](mailto:sales@cloverhill.ie)*





# CLOVER HILL FOOD INGREDIENTS LTD.

Mountleader Industrial Estate, Millstreet, Co. Cork. P51 E8PY

**Tel:** 029 - 21844 • **Fax:** 029 - 21845

**Email:** [sales@cloverhill.ie](mailto:sales@cloverhill.ie)

## CONTENTS

Sugarette Decorations	1
Chocolate Decorations	1
Non Edible Decorations	2
Muffin, Cupcake Cases and Packaging Options	3
Christmas Cake Ribbons	4
Frostings, Icings and Glazes	4
Christmas Essentials	5
Christmas Recipes	6
Order Sheet	10



## SUGARETTE DECORATIONS



**DECX100**  
Gold Lustre Sugar Star  
396 Pack, 19mm



**DECX087**  
Assorted Santa Head  
Sugar Piping  
196 Pack, 35mm



**DECX101**  
Assorted Children's  
Christmas Sugarette Discs  
448 Pack, 30mm



**DECX088**  
Assorted Christmas Friends  
Sugar Piping  
200 Pack, 25-30mm



**DECX086**  
Assorted Christmas  
Sugar Piping  
250 Pack, 30mm



**DECX102**  
Assorted Christmas Icons  
Sugar Piping  
200 Pack, 30mm

## CHOCOLATE DECORATIONS



**DECX103**  
Chocolate Christmas  
Tree  
135 Pack, 29-29mm



**DECX104**  
Chocolate Christmas  
Baubles  
72 Pack, 39 x 45mm



**DECX105**  
Assorted Chocolate  
Christmas Plaques  
72 Pack, 44 x 35mm



**DECX106**  
Triangle Chocolate  
Christmas Tree  
153 Pack, 47-30mm



**DECX107**  
Chocolate Christmas  
Puzzles  
198 Pack, 21 x 27mm



**DECX108**  
Oval Chocolate Merry  
Christmas Motto  
60 Pack, 55 x 35mm



**DECX109**  
Chocolate Santa Claus  
72 Pack, 46 x 35.6mm



**DECX110**  
Chocolate Christmas  
Strip 'Ho Ho Ho'  
198 Pack, 40 x 12mm

## CHOCOLATE DECORATIONS



**DECX111**  
White Chocolate Assorted  
Christmas Trees  
135 Pack, 34 x 27mm



**DECX112**  
White Chocolate  
Holly Discs  
198 Pack, 24mm



**DECX113**  
Assorted White  
Chocolate Discs  
198 Pack, 24mm



**DECX114**  
White Chocolate  
Reindeer  
54 Pack, 48 x 45.5mm



**DECX115**  
Assorted White Chocolate  
Square Decorations  
135 Pack, 29 x 29mm



**DECS017**  
Plain Gingerbread Men  
105 Pack, 163 x 77mm

**DECS016**  
Plain Gingerbread Trees  
105 Pack, 135 x 110mm

## NON EDIBLE DECORATIONS



**DECX116**  
Plastic Assorted Reindeer  
and Santa Rings  
144 Pack, 46 x 40mm



**DECX117**  
Plastic Santa with Toys  
6 Pack, 45mm



**DECX018**  
Plastic Green Christmas Fir Tree  
50 Pack, 6.5mm



**DECX024**  
Plastic Robin on Peg  
50 Pack, 23mm



**DECX048**  
Plastic Reindeer  
144 Pack, 55mm



**DECX082**  
Plastic Holly with Red Berries  
200 Pack, 38mm



**DECX085**  
Plastic Happy Christmas Red and  
Gold  
100 Pack, 70mm



**DECX084**  
Plastic Red Berry Holly and Merry  
Christmas  
50 Pack, 38mm



**DECX056**  
Happy Christmas Green and Gold  
Paper Motto  
100 Pack, 70mm

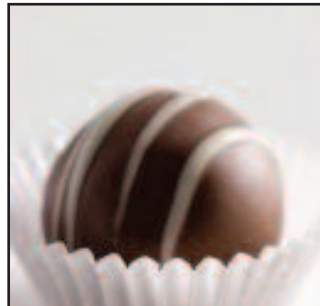
# MUFFIN, CUPCAKE CASES AND PACKAGING OPTIONS



**BACA089**  
Red Tulip Muffin Wraps  
160 x 160 x 50mm  
600 Pack



**BACA090 / BACA091**  
Red Cupcake Cases / Red Queen  
Cake Cases  
50 x 38mm / 45 x 25mm  
360 Pack / 1000 Pack



**BACA013**  
Petit Fours Cases  
25 x 19mm  
1000 Pack



**BACA085**  
Multi Coloured Muffin Wraps  
160 x 160 x 50mm  
4800 Pack



**BACA104 / BACA105**  
Snow Scene  
Queen Cake Cases / Muffin Cases  
45 x 25mm / 50 x 38mm  
500 Pack



**BACA102 / BACA103**  
Christmas Wreath  
Queen Cake Cases / Muffin Cases  
45 x 25mm / 50 x 38mm  
500 Pack



**BACA100 / BACA101**  
Season Greetings  
Queen Cake Cases / Muffin Cases  
45 x 25mm / 50 x 38mm  
500 Pack



**BACA106 / BACA107**  
Merry Christmas Characters  
Queen Cake Cases / Muffin Cases  
45 x 25mm / 50 x 38mm  
500 Pack



**CONT001/CONT002/CONT003**  
Plastic Pudding Bowls and  
Lids  
1lb/2lb/3lb, 20 Units



**PACK002**  
Christmas Log Box  
25 Pack, 8" x 4" x 4"



**PACK031**  
Christmas 6 Cupcake  
Window Box  
25 Pack, 240 x 165 x 77mm



**PACK004**  
Christmas Cake Box  
25 Pack, 8" x 8" x 4"



**CAKE BOARDS**  
Selection of Cake Boards  
Round and Square



**PACK032**  
Petit Fours Box  
24 Pack, 195 x 140 x 38mm



**CAKB021**  
Christmas Log Cards  
25 Pack, 8" x 4"



**FOIL CASES**  
Selection of Foil Cases  
Available

## CHRISTMAS CAKE RIBBONS



**DECX006**

White Frill with Holly on  
Silver Band  
21.9m



**DECX053**

Christmas Cake Frill Red  
with Gold Writing  
21.9m



**DECX097**

Snowmen and Reindeer on  
Orange Ribbon  
40mm x 20m



**DECX098**

Christmas Bauble Red on  
White Ribbon  
40mm x 20m



**DECX093 / DECX094**

Snowman Blue on White  
Ribbons  
25mm / 40mm x 20m



**DECX091**

Santa Suit Ribbon  
40mm x 20m

## FROSTINGS, ICINGS AND GLAZES



**TOFI034**

Regal Icing White 5Kg

**TOFI036**

Regalice Celebration 5Kg



**TOFI040**

Almond Paste 5Kg



**TOFI146 / TOFI147**

Milk / Dark  
Nooki Truffle and Ganache  
Mix 6Kg



**TOFI148**

Sacher Supreme  
Chocolate Coating  
6Kg



# CHRISTMAS ESSENTIALS

## Dried Fruit

<u>Code</u>	<u>Product</u>	<u>Unit/Size</u>
FRDR043	Dried Cranberries	11.34kg
FRDR013/015	Mixed Peel	10kg/1kg
FRDR002/007	Currants	12.5kg/3kg
FRDR012	Raisins	12.5kg
FRDR016/020/040	Natural/Whole and Broken Cherries	10kg/10kg/5kg
FRDR011/034	Sultanas	3kg/12.5kg
JAFR010	Mincemeat	12.5kg



## Spices

<u>Code</u>	<u>Product</u>	<u>Unit/Size</u>
HESP041/044	Mixed Spice	2.5kg/25kg
HESP011/100	Cinnamon	2.5kg/25kg
HESP025/026	Ground Ginger	2.5kg/25kg



## Colours and Compounds

<u>Code</u>	<u>Product</u>	<u>Unit/Size</u>
FOCO072	Red Velvet Flavour and Colour	1l
FOCO020	Green Colour	500ml
FOCO076	Banana Flavour Paste	1kg
FOCO077	Crème De Menthe Flavour Paste	1kg
FOCO078	Latte Macchiato Flavour Paste	1kg

## Nuts

<u>Code</u>	<u>Product</u>	<u>Unit/Size</u>
NUOT001/034	Fine Desiccated Coconut	25kg/2kg
NUOT010	Medium Desiccated Coconut	2kg
NUOT009	Light Amber Broken Walnuts	10kg
NULA016	Flaked Almonds	12.5kg
NUAL004	Ground Almonds	10kg



## Cakes and Bases

<u>Code</u>	<u>Product</u>	<u>Unit/Size</u>
CAMX055	Farmhouse Cake Mix	12.5kg
TOFI142	Meringue Powder	2kg
CAMX013/070/077	Digestive Crumb	25kg/14kg/5kg
CAMX096	Cloverhill Coconut Mix	12.5kg
CAMX034	Sponge Mix	12.5kg
CAMX047	Crème Cake Mix	12.5kg
CAMX048	Chocolate Crème Cake Mix	12.5kg
CAMX052	Plain Genoese Mix	12.5kg
CAMX087	Chocolate Genoese Mix	12.5kg
CAMX023	Madeira Mix	12.5kg
CAMX097	Broken Biscuits	25kg



## Bakers Accessories

<u>Code</u>	<u>Product</u>	<u>Unit/Size</u>
PAPE001	Baking Parchment	50Mt
PAPE003	Greaseproof Paper	450x750 Ream
PAPE004	Silicone Paper	450x750 Ream
PIBA002	21" Disposable Piping Bags	100
PIBA004	Medium Piping Bags	5cm - 50cm
PIBA005	Large Piping Bag	7cm - 60cm
PIBA011	Piping Tubes Plain	Pack 6
PIBA012	Piping Tubes Star	Pack 6





# CHRISTMAS RECIPES

## Christmas Luxury Scone



Code	Product	Weight
BRMX048	Clover Hill Luxury Scone Mix	1.3kg
MASH021	Salted Butter	255g
N/A	Water	62g
REFR020	Buttermilk	290g
FRDR043	Dried Cranberries	200g
N/A	Dried Apricots	190g
REFR005	Pasteurised Liquid Egg	330g
Yield	19 x 120g Christmas Luxury Scones	

### Recipe

- Add the mix to the bowl and then add room temperature butter.
- Mixing on slow speed, add the water and buttermilk in a steady stream over 1-2 minutes. Add in dried cranberries and dried apricots and mix evenly.
- Turn onto a floured board and gently knead to remove any cracks.
- Roll out lightly to 1" thickness. Cut scones with round cutter, place on floured preheated tray/sheet.
- Using a pastry brush, brush the scone with egg.
- Bake in a deck oven at 210°C for 20-24 minutes.
- Bake in a rack oven at 170°C for 20-25 minutes.



For a more comprehensive range of Christmas recipes contact customer service and we will email you our **“Christmas Made Easy”** range.

# CHRISTMAS RECIPES

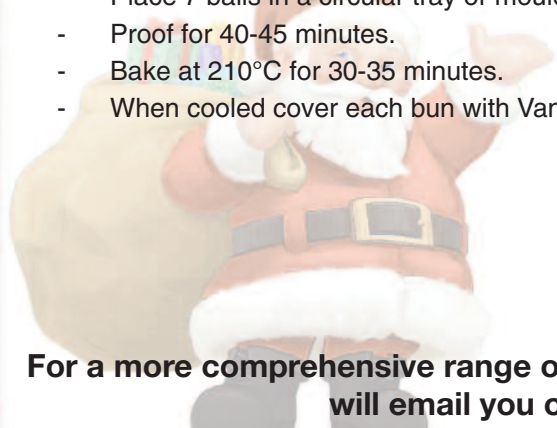
## Christmas Tear and Share Brioche



Code	Product	Weight
CAMX064	Berliner 100 Plus	3kg
N/A	Water	1.18kg
GROI003	Cooking Oil	218g
REFR022	Yeast	188g
FRDR034	Sultanas – Turkish	250g
FRDR043	Dried Cranberries	100g
FRDR020	Whole and Broken Cherries	50g
FRDR013	Mixed Peel	50g
N/A	Dried Apricots	50g
NUOT009	Light Amber Broken Walnuts	50g
HESP100	Cinnamon	20g
TOFI061	Vanilla Fudge Icing	420g
NUAL016	Flaked Almonds	210g
Yield	10 x 490g Christmas Tear and Share Brioche	

### Recipe

- Mix berliner 100, water, yeast and oil on slow speed for 2 minutes and fast speed for 7 minutes.
- Mix in the sultanas, dried cranberries, whole and broken cherries, mixed peel, dried apricot, light amber broken walnuts and cinnamon through the dough on slow speed. Rest the dough for 10 minutes.
- Scale at 70g pieces and shape in balls.
- Place 7 balls in a circular tray or mould.
- Proof for 40-45 minutes.
- Bake at 210°C for 30-35 minutes.
- When cooled cover each bun with Vanilla Fudge Icing and sprinkle with flaked almonds.



For a more comprehensive range of Christmas recipes contact customer service and we will email you our **“Christmas Made Easy”** range.

# CHRISTMAS RECIPES

## Christmas Chocolate Cake



Code	Product	Weight
CAMX087	Chocolate Genoese	Mix 1kg
GROI003	Cooking Oil	100g
N/A	Water 1	415g
CHOC125	Chocolate Chunks Dark	240g
N/A	Water 2	200g
N/A	Fresh Cream	2Kg
TOFI084	Sahnissimo Deluxe Neutral Cheesecake Mix	500g
N/A	Water 3	500g
FOCO079	Orange Flavour Paste	210g
CHOC023	Dark Chocolate Curls	680g
TOFI148	Sacher Supreme Chocolate Coating	1.6kg
DECX104	Chocolate Christmas Baubles	12
TOFI151	Decorar Blanco (White) Chocolate Coating	150g
Yield	4 x 1.3kg Christmas Chocolate Cakes	

### Recipe

- Mix the chocolate genoese mix, water 1 and the oil for 1 minute on slow speed.
- Scrape it down and mix it for 3 minutes on medium speed. Add water 2 and the chocolate chunks and mix for 1 minute on slow speed.
- Scale one layer at 150g in a sponge tin, this will be the bottom layer, layer A. Scale another layer at 275g in a sponge tin, this will be cut into two later and will be the middle layer, layer B and top layer, layer C, respectively. Bake at 180°C for 20 minutes.
- Lightly whip the cream. Mix the sahnissimo neutral, the water 3, orange flavour and 200g of dark chocolate curls. Mix the sahnissimo mix and the cream.
- Pipe 400g of the cream mix on top of the bottom layer, layer A. Cut the top layer into two. Place one of these layers, layer B, on top of the creamed bottom layer. Pipe 400g of the cream mix on top of the layer B. Finish off with layer C.
- Place these layers in the freezer for 15-20 minutes.
- While the cakes are in the freezer, heat the sacher supreme and the decorar blanco. Place the decorar blanco in the piping bag.
- Take the cakes out of the freezer and pour the sacher supreme on top and make sure that the sides of the cake have been covered. When still wet, apply 120g of dark chocolate curls on the sides of each cake.
- Finish off with 3 chocolate christmas baubles and use the decorar blanco to draw line from the baubles.

For a more comprehensive range of Christmas recipes contact customer service and we will email you our **“Christmas Made Easy”** range.

# CHRISTMAS RECIPES

## Christmas Truffles



Code	Product	Weight
TOFI146	Milk Nooki Truffle and Ganache Mix	1kg
TOFI147	Dark Nooki Truffle and Ganache Mix	1kg
TOFI120	Strawberry and Cream Crunch	166g
NUOT001	Fine Desiccated Coconut	83g
HESP011	Cinnamon	7g
COCO001	Cocoa Powder	76g
CHOC128	Scaglietta Dark	166g
BACA013	Petite Four Cases	166 cases
Yield	166 x 16g Christmas Truffles	

### Recipe

- Using a warm spoon, spoon out 12g of Nooki.
- Roll the Milk Nooki Truffle and Ganache mix into balls and roll in either Strawberry and Cream Crunch or Fine Desiccated Coconut.
- Roll the Dark Nooki Truffle and Ganache mix into balls and roll it in the Dark Scaglietta.
- Mix together the 7g of Cinnamon and 76g of Cocoa powder. Roll the balled Dark Nooki Truffle and Ganache mix in the Cinnamon and Cocoa powder mix.



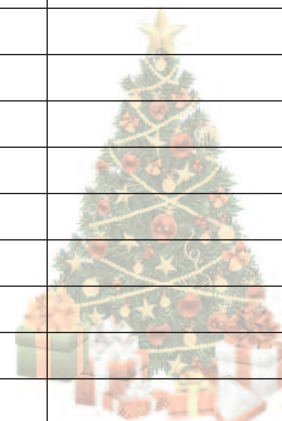
For a more comprehensive range of Christmas recipes contact customer service and we will email you our [\*\*“Christmas Made Easy”\*\*](#) range.

# ORDER FORM

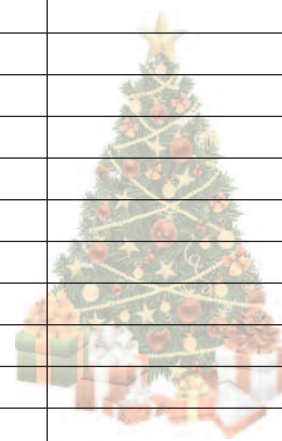
Order by phone, fax or email.

**P: +353 (0) 29 21844 F: +353 (0) 29 21845 E: sales@cloverhill.ie**

Store Name;		Store Number;		
Code	Product	Size	Pack	Order
BACA013	Petit Four Cases	25 x 19mm	1000	
BACA085	Multi Coloured Muffin Wraps	160 x 160 x 50mm	4800	
BACA089	Red Tulip Muffin Wraps	160 x 160 x 55mm	600	
BACA090	Red Cupcake Cases	50 x 38mm	360	
BACA091	Red Queen Cake Cases	45 x 25mm	1000	
BACA100	Season Greetings Queen Cases	45 x 25mm	500	
BACA101	Season Greetings Muffin Cases	50 x 38mm	500	
BACA102	Christmas Wreath Queen Cases	45 x 25mm	500	
BACA103	Christmas Wreath Muffin Cases	50 x 38mm	500	
BACA104	Snow Scene Queen Cases	45 x 25mm	500	
BACA105	Snow Scene Muffin Cases	50 x 38mm	500	
BACA106	Merry Christmas Characters Queen Cases	45 x 25mm	500	
BACA107	Merry Christmas Characters Muffin Cases	50 x 38mm	500	
BRMX048	Cloverhill Luxury Scone Mix	12.5kg	1	
CAKB001	Round Cake Drum	6"	5	
CAKB003	Round Cut Edge Cards	6"	100	
CAKB004	Square Cake Drum	6"	5	
CAKB005	Square Cut Edge Cards	6"	100	
CAKB006	Round Cake Drum	7"	5	
CAKB007	Round Cut Edge Cards	7"	100	
CAKB008	Square Cake Drum	7"	5	
CAKB009	Square Cut Edge Cards	7"	100	
CAKB012	Round Cake Drum	8"	5	
CAKB013	Round Cake Drum Gold	8"	5	
CAKB014	Round Cut Edge Cards	8"	100	
CAKB015	Round Single Thick Shrink	8"	25	
CAKB016	Square Cake Drum	8"	5	
CAKB018	Square Cut Edge Cards	8"	100	
CAKB019	Square Single Thick Shrink	8"	25	
CAKB020	Strawboard	8" x 4"	25	
CAKB021	Christmas Log Cards	8" x 4"	25	
CAKB022	Round Cake Drum	9"	5	
CAKB024	Round Cut Edge Cards	9"	100	
CAKB025	Round Single Thick Shrink	9"	25	
CAKB026	Square Cake Drum	9"	5	
CAKB027	Square Cake Drum Gold	9"	5	
CAKB029	Square Cut Edge Cards	9"	100	
CAKB030	Square Single Thick Shrink	9"	25	

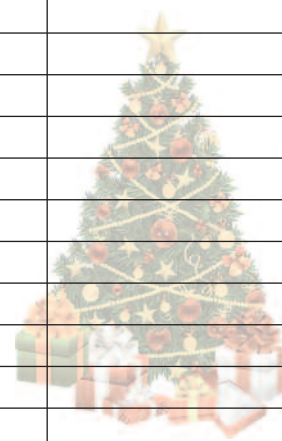


Store Name;		Store Number;		
Code	Product	Size	Pack	Order
CAKB031	Round Cake Drum	10"	5	
CAKB032	Round Cut Edge Cards	10"	50	
CAKB034	Round Single Thick Shrink	10"	25	
CAKB035	Square Cake Drum	10"	5	
CAKB037	Square Cut Edge Cards	10"	50	
CAKB038	Square Single Thick Shrink	10"	25	
CAKB039	Round Cake Drum	11"	5	
CAKB040	Round Cut Edge Cards	11"	50	
CAKB042	Round Gold Cake Drum	11"	5	
CAKB043	Round Single Thick Shrink	11"	25	
CAKB044	Square Cake Drum Board	11"	5	
CAKB047	Square Cut Edge Cards	11"	50	
CAKB049	Square Single Thick Shrink	11"	25	
CAKB050	Round Cake Drum	12"	5	
CAKB051	Round Cake Drum Gold	12"	5	
CAKB052	Round Cut Edge Cards	12"	50	
CAKB054	Round Single Thick Shrink	12"	25	
CAKB055	Square Cake Drum	12"	5	
CAKB057	Square Cut Edge Cards	12"	50	
CAKB058	Square Single Thick Shrink	12"	25	
CAKB059	Oblong cake Drum	13" x 9"	5	
CAKB060	Round Cake Drum	13"	5	
CAKB061	Round Cut Edge Cards	13"	50	
CAKB062	Round Single Thick Shrink	13"	25	
CAKB063	Square Cake Drum	13"	5	
CAKB064	Square Cake Drum Gold	13"	5	
CAKB065	Square Cut Edge Cards	13"	50	
CAKB066	Square Single Thick Shrink	13"	25	
CAKB067	Cake Drum	14 x 12"	5	
CAKB069	Round Cake Drum	14"	5	
CAKB071	Round Gold Cake Drum Board	14"	5	
CAKB072	Round Single Thick Shrink	14"	25	
CAKB073	Square Cake Drum	14"	5	
CAKB074	Square Cut Edge	14"	50	
CAKB077	Square Single Thick Shrink	14"	25	
CAKB079	Round Cake Drum	15"	5	
CAKB080	Round Cake Drum Gold	15"	5	
CAKB081	Round Single Thick Shrink	15"	25	
CAKB082	Square Cake Drum	15"	5	
CAKB083	Square Single Thick Shrink	15"	25	
CAKB084	Round Cake Drum	16"	5	
CAKB085	Round Gold Cake Drum	16"	5	
CAKB086	Round Single Thick Shrink	16"	25	
CAKB087	Square Cake Drum	16"	5	
CAKB088	Square Double Thick Strawboards	16"	10	
CAKB090	Square Single Thick Shrink	16"	25	
CAKB091	Round Cake Drum	17"	5	



Store Name;		Store Number;		
Code	Product	Size	Pack	Order
CAKB092	Square Cake Drum	17"	5	
CAKB093	Round Cake Drum	18"	5	
CAKB094	Square Cake Drum	18"	5	
CAKB095	Silver Rectangular Cake Drum Board	30" x 18"	1	
CAKB097	Cake Board	16" x 12"	5	
CAKB104	Cut Edge	14" x 7"	100	
CAKB105	Round Cut Edge	3"	2000	
CAKB107	Square Cake Drum Gold	8"	5	
CAKB108	Square Cake Drum Gold	12"	5	
CAKB109	Round Double Thick Strawboards	18"	10	
CAKB110	Round Strawboard	7"	25	
CAKB112	Square Strawboard	6"	25	
CAKB113	Square Strawboards	7"	25	
CAKB114	Square Double Thick Shrink Strawboards	10"	10	
CAKB115	Square Double Thick Shrink Strawboards	12"	10	
CAKB116	Square Double Thick Shrink Strawboards	14"	10	
CAMX013	Digestive Crumb	25kg	1	
CAMX023	Madeira Mix	12.5kg	1	
CAMX034	Sponge Mix	12.5kg	1	
CAMX047	Crème Cake Mix	12.5kg	1	
CAMX048	Chocolate Crème Cake Mix	12.5kg	1	
CAMX052	Plain Genoese Mix	12.5kg	1	
CAMX055	Farmhouse Cake Mix	12.5kg	1	
CAMX064	Berliner 100 Plus	25kg	1	
CAMX070	Digestive Crumb	14kg	1	
CAMX077	Digestive Crumb	5kg	1	
CAMX087	Chocolate Genoese Mix	12.5kg	1	
CAMX096	Cloverhill Coconut Mix	12.5kg	1	
CAMX097	Broken Biscuits	25kg	1	
CHOC023	Dark Chocolate Curls	2kg	1	
CHOC125	Chocolate Chunks Dark	10kg	1	
CHOC128	Scaglietta Dark	5kg	1	
COCO001	Cocoa Powder	25kg	1	
COCO002	Cocoa Powder	5kg	1	
CONT001	Pudding Bowls and Lids	1lb	20	
CONT002	Pudding Bowls and Lids	2lb	20	
CONT003	Pudding Bowls and Lids	3lb	20	
CONT004	Quiche Foils	6"	1000	
CONT009	Foil Plates	9"	1000	
CONT010	Deep Custard Cups	3"	217	
CONT011	Deep Custard Cups	3"	6400	
CONT014	Mini Pie Cases Sleeves	2.5"	275	
CONT017	Large Take Away Foils	6"x 2.5"x 2"	500	
CONT030	Shallow Rectangular Tray	12" x 7.5"	240	
CONT034	Foil Plates	7.75"	1000	
CONT037	Mini Pie Cases Box	38 x 22mm	13000	
CONT041	Tart Foil Plates	9"	50	

Store Name;		Store Number;		
Code	Product	Size	Pack	Order
CONT046	Black Plastic Lid for Sponge Container	8"	210	
CONT047	Black Plastic Base for Sponge Container	8"	210	
CONT080	Hinged 1lb Plastic Container	1lb	240	
CONT138	Tin Foil	18" 90m	1	
CONT182	Two Compartment Hinged Tray	198 x 100 x 25mm	200	
CONT184	Container Swiss Roll Hinged	268 x 155 x 103mm	280	
CONT185	Rectangular Container Black Eclair Base	207 x 113 x 70mm	450	
CONT186	Rectangular Container Clear Eclair Lid	207 x 113 x 70mm	450	
CONT187	Tart Window Box	9 x 9 x 2	150	
CONT190	6 Division Hinged Plastic Queen Cake Containers	208 x 140 x 79mm	110	
CONT194	2 Slice Cake Hinge Containers	29 x 269mm	680	
CONT195	Large Rect. Hinged Cake Containers	87 x 285mm	270	
CONT201	2 Pack Cupcake Container	158 x 164 x 83mm	510	
CONT202	Celebration Bases	10"	180	
CONT203	Celebration Lids	10"	180	
CONT209	4 Division Plastic Hinged Muffin Container	200 x 190 x 75mm	320	
CONT210	Deep Foils	8"	650	
DECS016	Plain Gingerbread Trees	135 x 110mm	105	
DECS017	Plain Gingerbread Men	163 X 77mm	105	
DECX006	White Frill with Holly on Sliver Band	21.9m	1	
DECX018	Plastic Green Christmas Fir Tree	6.5cm	50	
DECX024	Plastic Robin on Peg	23mm	50	
DECX048	Plastic Reindeer	55mm	144	
DECX053	Christmas Cake Frill Red with Gold Writing	21.9m	1	
DECX056	Happy Christmas Green and Gold Paper Motto	70mm	100	
DECX082	Plastic Holly with Red Berries	38mm	200	
DECX084	Plastic Red Berry Holly and Merry Christmas	38mm	50	
DECX085	Plastic Happy Christmas Red and Gold Motto	70mm	100	
DECX086	Assorted Christmas Sugar Piping	30mm	250	
DECX087	Assorted Santa Head Sugar Piping	35mm	196	
DECX088	Assorted Children's Friend's Sugar Piping	25-30mm	200	
DECX091	Santa Suit Ribbons	40mm x 20m	1	
DECX093	Snowman Blue on White Ribbons	25mm x 20m	1	
DECX094	Snowman Blue on White Ribbons	40mm x 20m	1	
DECX097	Snowmen and Reindeer on Orange Ribbons	40mm x 20m	1	
DECX098	Christmas Bauble Red on White Ribbons	40mm x 20m	1	
DECX100	Gold Lustre Sugar Star	19mm	396	
DECX101	Assorted Children's Christmas Sugarettes	30mm	448	
DECX102	Assorted Christmas Icons Sugar Piping	30mm	200	
DECX103	Chocolate Christmas Tree	29-29mm	135	
DECX104	Chocolate Christmas Baubles	39 x 45mm	72	
DECX105	Assorted Chocolate Christmas Plaques	44 x 35mm	72	
DECX106	Triangle Chocolate Christmas Tree	47-30mm	153	
DECX107	Chocolate Christmas Puzzles	21 x 27mm	198	
DECX108	Oval Chocolate Merry Christmas Motto	55 x 35mm	60	
DECX109	Chocolate Santa Claus	46 x 35.6mm	72	
DECX110	Chocolate Christmas Strip 'Ho Ho Ho'	40 x 12mm	198	





Store Name;		Store Number;		
Code	Product	Size	Pack	Order
DECX111	White Chocolate Assorted Christmas Trees	34 x 27mm	135	
DECX112	White Chocolate Holly Discs	24mm	198	
DECX113	Assorted White Chocolate Discs	24mm	198	
DECX114	White Chocolate Reindeer	48 x 45.5mm	54	
DECX115	Assorted White Chocolate Square Decorations	29 x 29mm	135	
DECX116	Plastic Assorted Reindeer and Santa Rings	46 x 40mm	144	
DECX117	Plastic Santa with Toys	45mm	6	
FOCO020	Green Colour	500ml	1	
FOCO072	Red Velvet Flavour and Colour	1L	1	
FOCO076	Banana Flavour Paste	1kg	1	
FOCO077	Crème De Menthe Paste	1kg	1	
FOCO078	Latte Macchiato Flavour Paste	1kg	1	
FOCO079	Orange Flavour Paste	1kg	1	
FRDR002	Currants	12.5kg	1	
FRDR007	Currants	3kg	1	
FRDR011	Sultanas	3kg	1	
FRDR012	Raisins	12.5kg	1	
FRDR013	Mixed Peel	10kg	1	
FRDR015	Mixed Peel	1kg	1	
FRDR016	Natural Whole and Broken Colour Cherries	10kg	1	
FRDR020	Whole and Broken Cherries	10kg	1	
FRDR034	Sultanas – Turkish	12.5kg	1	
FRDR040	Whole Cherries	5kg	1	
FRDR043	Dried Cranberries	11.34kg	1	
GROI003	Cooking Oil	20L	1	
HESP011	Cinnamon	2.5kg	1	
HESP025	Ground Ginger	2.5kg	1	
HESP026	Ground Ginger	25kg	1	
HESP041	Mixed Spice	2.5kg	1	
HESP044	Mixed Spice	25kg	1	
HESP100	Cinnamon	25kg	1	
JAFR010	Mincemeat	12.5kg	1	
MASH21	Salted Butter	25kg	1	
NUAL004	Ground Almonds	10kg	1	
NUAL016	Flaked Almonds	12.5kg	1	
NUOT001	Fine Desiccated Coconut	25kg	1	
NUOT009	Light Amber Broken Walnuts	10kg	1	
NUOT010	Medium Desiccated Coconut	2kg	1	
PACK002	Christmas Log Box	8" x 4" x 4"	25	
PACK004	Christmas Cake Box	8" x 8" x 4"	25	
PACK031	Christmas 6 Cupcake Window Box	240 x 165 x 77mm	25	
PACK032	Petit Four Box	195 x 140 x 38mm	24	
PAPE001	Baking Parchment	50mt	1	
PAPE003	Greaseproof Paper	450 x 750 Ream	1	
PAPE004	Silicone Paper	450 x 750 Ream	1	
PIBA002	Disposable Piping Bags	21"	100	
PIBA004	Medium Piping Bags	5cm–50cm	6	



Store Name;		Store Number;		
Code	Product	Size	Pack	Order
PIBA005	Large Piping Bags	7cm-60cm	6	
PIBA011	Piping Tubes Plain	13mm	6	
PIBA012	Piping Tubes Star	13mm	6	
REFR005	Pasteurised Liquid Egg	15kg	1	
REFR020	Buttermilk	20L	1	
REFR022	Yeast	10kg	1	
TOFI034	Regal Icing White	5kg	1	
TOFI036	Regal Ice Celebration	5kg	1	
TOFI040	Almond Paste	5kg	1	
TOFI061	Vanilla Fudge Icing	12.5kg	1	
TOFI084	Sahnissimo Deluxe Neutral Cheesecake Mix	1kg	1	
TOFI120	Sweetberry and Cream Crunch	2.5kg	1	
TOFI142	Meringue Powder	2kg	1	
TOFI146	Milk Nooki Truffle and Ganache Mix	6kg	1	
TOFI147	Dark Nooki Truffle and Ganache Mix	6kg	1	
TOFI148	Sacher Supreme Chocolate Coating	6kg	1	
TOFI151	Decorar Blanco (White) Chocolate Coating	6kg	1	

**All orders need to be placed in written form either email or fax.  
E: [sales@cloverhill.ie](mailto:sales@cloverhill.ie) F: +353 (0) 29 21845**



\*Due to the seasonal nature, no returns of decorations can be accepted. All orders subject to availability. Final orders for the Christmas lines will be accepted until your last scheduled delivery day on or before the 22nd of December.



**From all of us at Clover Hill  
we would like to thank you for  
your continued support and  
wish you and yours  
a Happy Christmas  
and a Prosperous New Year.**

